

# YPRESSSWITCH

## Pressure Switch

May be wired normally open or normally closed.



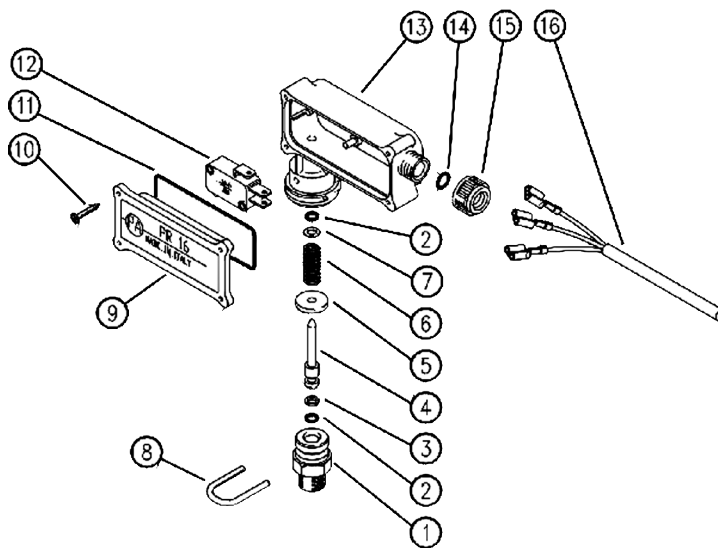
### SPECIFICATIONS

Part Number	YPRESSSWITCH
Max Pressure	3,550 PSI
Activation Pressure	580 PSI
Max Temperature	195° F
Max Voltage	250 Volts
Maximum Amps Resistive Load	15 Amps
Connection	1/4" NPT-M
Dimensions	3.3" x 3.6" x 1.3" w/ 45" Cord
Weight	.66 lbs
Materials	Stainless Steel, Brass Buna-N, Plastic

\*Not rated for inductive loads, May not be used for starting motors; will not handle start-up current.

### PARTS LIST

No.	Part No.	Description	Qty.
1	Y29004651	Nipple, 1/4 NPT, SST	1
2*	Y10303800	O-ring, 1.78 x 3.68	2
3*	Y10400200	Back-up Ring, 4.2 x 7 mm	1
4	Y29004331	Brass Piston	1
5	Y29005631	Washer, 4 x 16 x 2.5 mm	1
6	Y29008431	Spring	1
7	Y14351900	Washer, 4 x 8 x 0.5 mm	1
8	Y29008751	Clip, SST	1
9	Y29004284	Cover	1
10	Y16302000	Screw, 2.5 x 12 mm	4
11*	Y10321042	O-ring, 2.62 x 42.52 mm	1
12	Y15500100	Microswitch, 16A 250V	1
13	Y29004184	Plastic Body	1
14*	Y10310992	O-ring, 2.4 x 7.3	1
15	Y29010984	Nut	1
16	Y12500000	Cable	1
*	Y29004824	Repair Kit	1

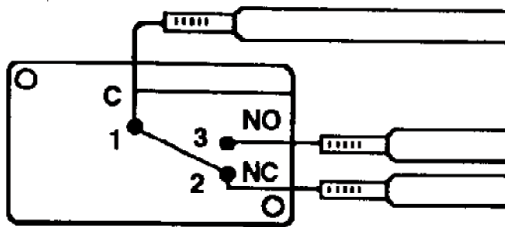


General Pump  
is a member of  
the Interpump Group



Ref 300404 Rev. C  
12-19



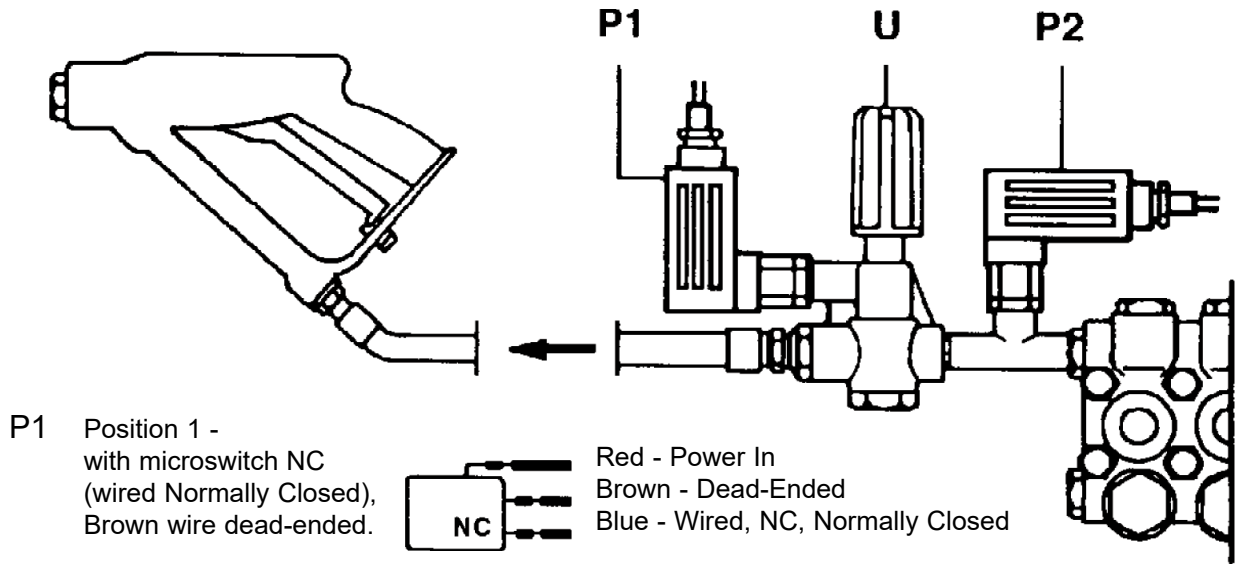
**SWITCH SCHEMATIC**

Red - Power In

Brown - Switch Normally Open

Blue - Switch Normally Closed

**Microswitch** - Supplied with threads for an open or closed pressure switch. Choose which way switch is to be used and dead end the lead that is not in use. Above switch is wired normally closed with the brown wire to be dead-ended.

**ASSEMBLY SCHEMATIC****!!! WARNING !!!**

**THIS PRODUCT MUST BE INSTALLED BY  
A QUALIFIED ELECTRICIAN TO AVOID  
RISK OF SHOCK OR ELECTROCUTION.**