

PW4000A GunJet® Spray Gun

USER GUIDE



Spraying Systems Co.®
Experts in Spray Technology

MI-PW4000A
spray.com

CONTENTS

INTRODUCTION	2
WARNINGS & PRECAUTIONS	3
INSTALLATION	5
MAINTENANCE	6
PARTS LIST	8

INTRODUCTION

The Model PW4000A- GunJet is a high-pressure spray gun that offers exceptional operator control, even at maximum flow and pressure conditions. A bottom pivot trigger reduces operator fatigue by making trigger pull easier. The shut-off valve is located in the base of the handle, concentrating heat away from the operator’s hand and slowing heat build-up. A special trigger lock feature locks in the “off” position to prevent accidental discharge and retracts flush into the handle when the gun is in use. The Model PW4000AW- incorporates a continuous “Weep” feature to minimize the chance of freezing and, with the exception of the valve seat sub-assembly, the PW4000A- and PW4000AW- GunJet spray guns are identical and require the same installation and operating procedures. The Model PW4000A- and PW4000AW- GunJet spray guns with the “S” option have a built-in swivel to reduce operator fatigue and prolong hose life.

FEATURES OF THE MODEL PW4000A - GUNJET SPRAY GUNS:

- Operating pressure range — up to 4000 psi (275 bar).
- Maximum recommended temperature — 300° F (150° C).
- Forged Brass Inlet Body.
- Stainless Steel shut-off.
- TEFLON® Back-Up Rings.*
- Viton® O-rings.*
- Handle design helps to control reactionary force during trigger actuation.
- Teflon is a registered trademark of DuPont Company

* Viton is a registered trademark of DuPont Performance Elastomers



WARNINGS & PRECAUTIONS

IMPORTANT: READ ALL INSTRUCTIONS BEFORE USING SPRAY GUN

THIS IS A HIGH-PRESSURE DEVICE WHICH SHOULD ONLY BE USED IN A PROPERLY ENGINEERED SYSTEM. THIS SPRAY GUN SHOULD BE OPERATED ONLY BY TRAINED OPERATORS AND KEPT OUT OF REACH OF CHILDREN. PLEASE READ THE FOLLOWING INSTRUCTION SHEETS BEFORE ATTEMPTING TO OPERATE THE PW4000A- OR PW4000AW- HIGH PRESSURE GUNJET SPRAY GUNS.

HEED ALL THESE WARNINGS or serious and permanent injury may result.

GENERAL WARNING FOR HIGH PRESSURE SPRAY GUNS: IF THE OPERATING PRESSURE IS BETWEEN 100 PSIG (0.69 MPA) AND 3200 PSIG (22.06 MPA), THEN AN EXTENSION OR WAND SHOULD BE USED THAT SEPARATES THE DISCHARGE NOZZLE A MINIMUM OF 29.5 INCHES (750 MM) FROM THE TRIGGER MECHANISM. DO NOT ASSEMBLE DISCHARGE NOZZLE DIRECTLY INTO THE SPRAY GUN.

IF THE OPERATING PRESSURE IS BETWEEN 3200 PSIG (22.06 MPA) AND 5000 PSIG (34.48 MPA), THEN AN EXTENSION OR WAND SHOULD BE USED THAT SEPARATES THE DISCHARGE NOZZLE A MINIMUM OF 4.0 FEET (1.22 M) FROM THE TRIGGER MECHANISM. DO NOT ASSEMBLE DISCHARGE NOZZLE DIRECTLY INTO THE SPRAY GUN.

1. **DO NOT** aim gun at any person or any part of the body. Fluids under high pressure can penetrate the human skin and can cause severe injury, possibly resulting in amputation or death. Hot liquids and chemicals can also cause burns or injury. If any part of the body comes in contact with the spray stream, immediately consult a physician.
2. **DO NOT** at any time place hands or any other part of the body in front of spray nozzle or tip.
3. **DO NOT** alter equipment in any manner; if repairs are necessary, use only genuine factory repair parts supplied by Spraying Systems Co.
4. **DO NOT** exceed maximum operating pressure of the lowest rated accessory item within the spray system even though some of the accessories have a higher maximum pressure rating.
5. **DO NOT** leave equipment under pressure unattended at any time. Relieve pressure by shutting off power to pump, turning off the liquid supply to the pump, and actuating Trigger until all fluid ceases to flow; then position Trigger Lock to the locked position.



6. **DO NOT** use damaged, perforated, or weakened fluid hose.
7. **DO NOT** use a GunJet® with a faulty or damaged Trigger Lock.
8. **DO NOT** operate a spray gun if there are any leaks from the packings, fittings, hoses, etc. Fluids that are under high pressure can penetrate skin, cloth, etc., and cause serious injury.
9. **DO NOT** touch any metal parts of the gun or accessories when spraying hot liquids or severe injury can occur.
10. **DO NOT** handle a spray gun without a tip or nozzle any differently than one with a tip or nozzle. Even with the tip or nozzle removed, the spray gun can discharge a large volume of liquid at a high velocity.

SAFETY SHOULD ALWAYS BE OBSERVED:

1. **DO** use a two-handed control of PW4000A GunJet at all times. Grasp spray gun firmly with both hands. If an extension is used, grasp the extension. (Insulated extension if spraying hot liquids.)
2. **DO** adopt a secure body stance prior to and during spray operation to safely control the high reactionary force of this unit.
3. **DO** impress on other people in the spraying area the importance of obeying strict safety precautions for everyone's safety.
4. **DO** develop a habit of shutting off the power to the pump, relieving fluid pressure from gun and hose by actuating trigger until all fluid ceases to flow, and setting the Trigger Lock in the locked position, before attempting to remove the tip, nozzle, gun or any part of the gun, or when gun is not in use.
5. **DO** check operation of Trigger Lock before each spray period. Trigger Lock must hold the Trigger to its forward position. (Adjust if necessary; see section Trigger Adjustment Procedure.)
6. **DO** carefully check and tighten threaded connections regularly. Make them secure and leak proof.
7. **DO** flush gun after each spray period using the same safety precautions as used during spraying operations. Always use the lowest possible pressure for flushing.
8. **DO** keep gun clean and dry to allow for positive grip.



9. **DO** use GunJet® in a well-ventilated area and make sure spray gun is grounded properly when used in a possibly explosive or inflammable environment. A grounded-type hose should be used.

IMPORTANT: In case of the slightest appearance of skin penetration from spray, CONSULT A PHYSICIAN IMMEDIATELY!

INSTALLATION

1. Before installing GunJet® to hose, select WashJet® tip or, if desired, an appropriate extension and WashJet nozzle for your application. Install on gun with nozzle positioned for your particular spraying needs and tighten.
2. Make sure all power is turned off to the pump. Attach GunJet to high-pressure hose with rating to meet or exceed the maximum operating pressure to be used. When spray gun is being used in a possible explosive or flammable environment, a grounded-type hose should be used.
3. Follow your pump and component parts manufacturer's recommendations for operation, but in any case, do not exceed the pressure or temperature of the lowest rated component within the system.
4. Make sure all power to the pump is turned off and there is no pressure in any part of the system. Examine all connections, making sure they are of the proper type and are secure.
5. Before turning on the pump and holding the GunJet in downward vertical position pointed away from body, familiarize yourself with the operation of the Trigger Lock (17)
6. Make sure Trigger Lock (17) is in "locked" position. Do not turn on the pump power or operate spray gun if Trigger Lock is not operating properly.



MAINTENANCE

With proper care, your PW4000A GunJet® will give you reliable service. To maintain this performance, parts should be inspected regularly and replaced when necessary with genuine **Spraying Systems Co.** parts.

DISASSEMBLY PROCEDURE:

(SEE FIGURES 1 & 2 ON PAGE 9)

If it becomes necessary to rebuild the Valve Assembly (3 - 13) order Spare Parts Kit ABPW4000A-KIT or ABPW4000AW-KIT, follow these steps:

1. Make sure all air, electrical and liquid lines to the pump are turned off.
2. Release all the pressure and liquid (from the hose to GunJet) by operating Trigger until fluid ceases to flow.
3. Set Trigger Lock (17) in locked position.
4. Remove spray gun from hose.
5. Remove the five Screws (19) and Housing (18). See Figure 1, Page 9.
6. Lift out all internal parts, leaving all parts assembled. Trigger Lock (17) should remain in Housing (18).
7. Clamp the Valve Body (2) and remove Retaining Screw (4) containing Gasket (5), Back-Up Ring (6) and O-ring (7). See Figure 2, Page 9.
8. Remove Stem (9), Valve Seat (8) with Back-Up Ring (11) and O-ring (12), as well as Ball (10) and Spring (13).

PARTS REPLACEMENT/ASSEMBLY PROCEDURE:

(SEE FIGURES 1 & 2 ON PAGE 8)

1. Install new Back-Up Ring (11) and O-ring (12) on new Valve Seat (8).
2. Clamping Valve Body (2) insert the following new parts: Spring (13), Ball (10) and Valve Seat Sub-Assembly (8, 11 & 12) into Valve Body.
3. ***NOTE: Cross-drilled holes in Valve Seat (8) should be in line with inlet of valve body to minimize pressure loss. See "Figure 2".***
4. Remove Gasket (5), O-ring (7), and Back-up Ring (6), from Retaining Screw (4) and replace with new parts.



IMPORTANT: O-RINGS (7 & 12) AND BACK-UP RINGS (6 & 11) MUST BE INSTALLED IN THE CORRECT POSITION AS SHOWN OR THE SPRAY GUN WILL LEAK AND PERMANENTLY DAMAGE THE O-RINGS. SEE "FIGURE 2".

5. Insert new Stem (9) through Retaining Screw Sub-Assembly (4 thru 7), inserting rounded end through O-ring (7).
6. Install and tighten Retaining Screw Sub-Assembly and Stem into Valve Body (2) with new Gasket (5).
7. Insert new Spring (3) over Stem (9).
8. Re-assemble into Housing (18).

NOTE: Be careful not to lose Trigger Spring (3).



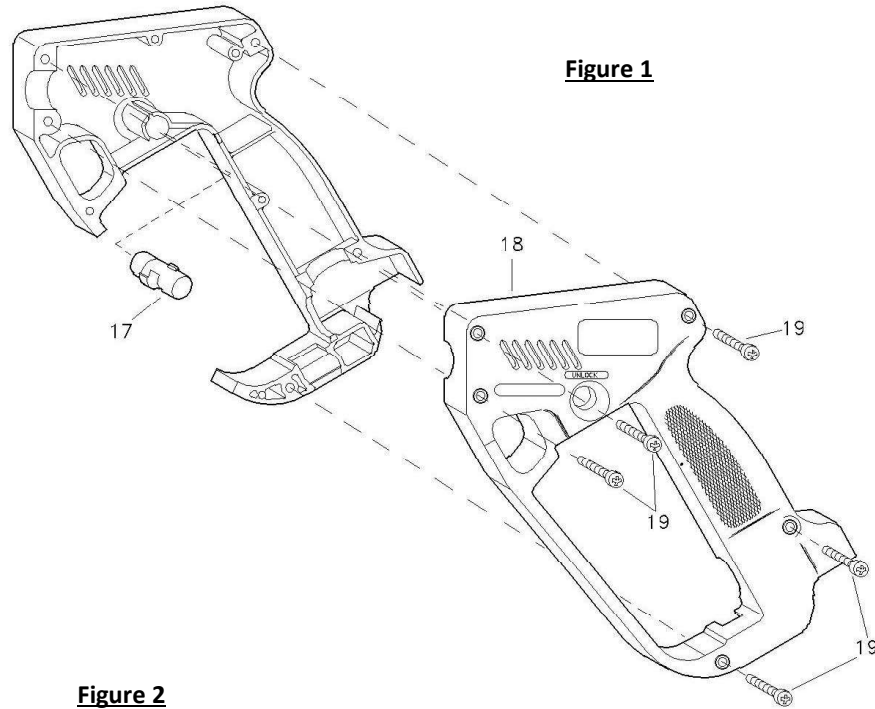
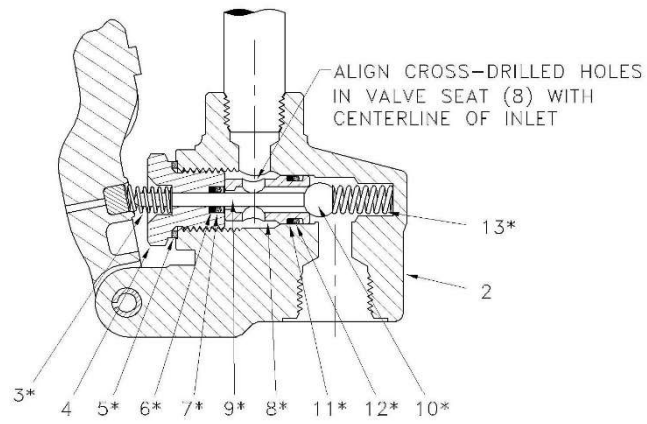


Figure 1

Figure 2



spray.com

[illegible]



© Spraying Systems Co.



- TOUGH NYLON HOUSING FOR ROUGH SERVICE APPLICATIONS.
- HANDLE REMAINS COMFORTABLE DURING HOT STRIPPING OPERATIONS... UP TO MAXIMUM TEMPERATURE OF 300°F (150°C).
- HANDLE GRIP DESIGNED FOR GLOVED OR UNGLOVED HAND AND IS COMFORTABLE FOR SMALL OR LARGE HANDS.
- HANDLE DESIGN HELPS TO CONTROL THE REACTIONARY FORCE DURING OPERATION.
- EASY TRIGGER PULL DUE TO BOTTOM PIVOT ACTION.
- BOTTOM INLET CONNECTION.
- STAINLESS STEEL SHUT-OFF WITH VITON SEALS AND TEFLON BACK-UP PRESSURES UP TO 4000 PSI (275 bar).
- WEIGHT - 1 1/2 LBS. (680 gr).
- OVERALL HEIGHT - 7 3/4" (197 mm).

* PW4000AW-- MODELS WITH "WEEP" FEATURE (TO PREVENT FREEZING) ARE ALSO AVAILABLE WITH THE SAME CONNECTIONS AS TABULATED.

MODEL NO. __ PW4000A & __ PW4000A-1/4x1/4

DESCRIPTION: No. PW4000A--- GUNJET SPRAY GUNS			Spraying Systems Co. Spray Nozzles and Accessories P.O. Box 75200 • Wheaton, IL 60152-7500	Data Sheet No. PW4000A	COUNTRY USA
				New No. Ref.	Ref.



ITEM	PART No.	DESCRIPTION
1A	CP24465-3/8	OUTLET ADAPTER, BRASS (FOR PW4000AW-3/8x3/8)
1B	BCP24465-3/8	OUTLET ADAPTER, BRASS (FOR B-PW4000AW-3/8x3/8 BSPT)
1C	CP24465-1/4	OUTLET ADAPTER, BRASS (FOR PW4000AW & PW4000AW-1/4x1/4)
1D	BCP24465-1/4	OUTLET ADAPTER, BRASS (FOR B-PW4000AW & B-PW4000AW-1/4x1/4 BSPT)
2	B24468-3/8	BODY & TUBE SUB-ASSEMBLY, BRASS & STEEL, ZINC PLATED (FOR PW4000AW, PW4000AW-3/8x3/8)
3	B24468-1/4	BODY & TUBE SUB-ASSEMBLY, BRASS & STEEL, ZINC PLATED (FOR B-PW4000AW, B-PW4000AW-3/8x3/8 BSPT)
4	CP25986-302SS	TRIGGER SPRING, TYPE 302 STAINLESS STEEL
5	CP24462	RETAINING SCREW, BRASS
6	CP17177	GASKET, BRASS
7	CP24457-TEF	BACK-UP RING, TEFLO
8	CP24460-1-SS	SEAT, STAINLESS STEEL
9	CP24459-SS	STEM, STAINLESS STEEL
10	CP17175-TEF	BACK-UP RING, TEFLO
11	CP17175-TEF	BACK-UP RING, TEFLO
12	CP17177-2-11-VI	O-RING, VITON
13	CP24464-PHSS	SPRING, TYPE 17-7PH STAINLESS STEEL
14	CP17889-420SS	ROLL PIN, TYPE 420 STAINLESS STEEL
15	24468-SSNY	TRIGGER SUB-ASSEMBLY, NYLON (BLACK) AND STAINLESS STEEL
16	CP24466-NYB	TRIGGER LOCK, NYLON (BLACK)
17	CP24467-NYB	RIGHT & LEFT HAND HOUSING SET, NYLON (BLACK)
18	CP17103-1/16-302SS	SCREW, TYPE 302 STAINLESS STEEL (5 REQ'D)

17 —

18

15

14

16

13

12

11

10

9

8

7

6

5

4

3

2

1A

1B

ASSEMBLY PART NO.	
No. PW4000AW	GunJet® SPRAY GUN
No. PW4000AW-3/8x3/8	GunJet® SPRAY GUN
No. PW4000AW-1/4x1/4	GunJet® SPRAY GUN
No. B-PW4000AW	GunJet® SPRAY GUN (BSPT VERSION)
No. B-PW4000AW-3/8x3/8	GunJet® SPRAY GUN (BSPT VERSION)
No. B-PW4000AW-1/4x1/4	GunJet® SPRAY GUN (BSPT VERSION)

* AB-PW4000AW-KIT, SPARE PARTS KIT (INCLUDES ALL ITEMS MARKED WITH *)

** BODY AND TUBE SUB-ASSEMBLY (ITEM 2) No. 24468-___ & B24468-___, TO BE SOLD COMPLETE.

DESCRIPTION:

— Parts List —

No. PW4000AW-___ & B-PW4000AW-___

GunJet® SPRAY GUNS (WITH "WEEP" FEATURES)

Spraying Systems Co.®

Spray Nozzles and Accessories

P.O. Box 7900 • Wheaton, IL 60189-7900

Rev. No. 1

Part List No. PL PW4000AW

SHEET OF

ITEM	PART No.	DESCRIPTION
1A	CPB24465-3/8	OUTLET ADAPTER, BRASS (FOR BPW4000AW-3/8x3/8)
1B	CPB24463-1/4	OUTLET ADAPTER, (FOR BPW4000AW & BPW4000AW-1/4x1/4)
2	24468-3/8 BSPT	BODY (BRASS) & TUBE (STEEL, ZINC PLATED) SUB-ASSEMBLY (FOR BPW4000AW, BPW4000AW-3/8x3/8)
3	24468-1/4 BSPT	BODY (BRASS) & TUBE (STEEL, ZINC PLATED) SUB-ASSEMBLY (FOR BPW4000AW-1/4x1/4)
4	CP25966-302SS	TRIGGER SPRING, TYPE 302 STAINLESS STEEL
5	CP24462	RETAINING SCREW, BRASS
6	CP24457-TEF	GASKET, BRASS
7	CP7717-1-VI	BACK-UP RING, TEFLON
8	CP24460-1-SS	O-RING, VITON
9	CP24459-SS	SEAL, STAINLESS STEEL
10	CP7671-3-3/16-440CHS	STEAM, STAINLESS STEEL
11	CP17125-TEF	BALL, TYPE 440C HARDENED STAINLESS STEEL
12	CP7717-2/11-VI	BACK-UP RING, TEFLON
13	CP24464-PHSS	O-RING, VITON
14	CP17889-420SS	SPRING, TYPE 17-7PH STAINLESS STEEL
15		ROLL PIN, TYPE 420 STAINLESS STEEL

ITEM	PART No.	DESCRIPTION
15	24469-NYSS	TRIGGER SUB-ASSEMBLY, NYLON (BLACK) AND STAINLESS STEEL
16	CP24458-NYB	TRIGGER LOCK, NYLON (BLACK)
17	CP24467-NYB	RIGHT & LEFT HAND HOUSING SET, NYLON (BLACK)
18	CP17103-1/16-302SS	SCREW, TYPE 302 STAINLESS STEEL (5 REQ'D)
	No. BPW4000AW GunJet® SPRAY GUN	
	No. BPW4000AW-3/8x3/8 GunJet® SPRAY GUN	
	No. BPW4000AW-1/4x1/4 GunJet® SPRAY GUN	

ABPW4000AW-KIT, SPARE PARTS KIT (INCLUDES ALL ITEMS MARKED WITH *)

DESCRIPTION:
NO. BPW4000AW---
GUNJET SPRAY GUNS
(WITH "WEEP" FEATURES)

Spraying Systems Co.
Spray Nozzles and Accessories
P.O. Box 7900 - Wheaton, IL 60189-7900

Part List No.
PL BPW4000AW

Rev. No. _____
Ref. _____

SHEET OF





Spraying Systems Co.®

Experts in Spray Technology

North Avenue and Schmale Road, P.O. Box 7900,
Wheaton, IL 60187-7901

Tel: 1.800.95.SPRAY

Intl. Tel: 1.630.665.5000

Fax: 1.888.95.SPRAY

Intl. Fax: 1.630.260.0842

www.spray.com



MI-PW4000A

© Spraying Systems Co. 2019